

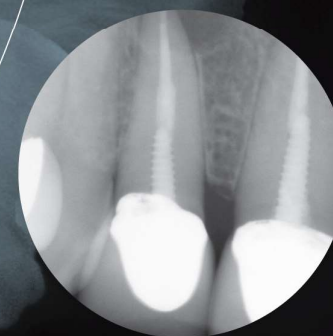
# SAF-3000

DENTAL DIGITAL RADIOGRAPHY

**SD**  
S A F A R I



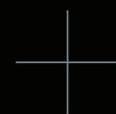
- Adopting high-frequency circuit of inverter type
- X-ray system the most suitable to diverse digital sensor
- Simultaneous use of digital sensor and film
- More than 300 exposures are possible with one time charging of battery
- More compact size/weight than existing dental X-ray: 1.8kg (4lbs)



**Model** SAF-3000  
**X-ray generator** Inverter  
**Tube voltage** 60kV(fixed)  
**Tube current** 2mA  
**Tube type** Stationary

**Tube Focal Spot** 0.8mm  
**Target Angle** 20°  
**Exposure(Increase 0.05sec)** 0.05~1.25sec - Digital Sensor  
0.20~1.35sec - Film  
**Power Requirement** DC 14.2~16.8V

**Weight** 1.8kg  
**Detector** Film / Digital Sensor  
**Power Supply** Rechargeable Battery  
**Display** Graphic LCD



# Detail & Accessories

Safari Dental Inc.  
Cordless Digital  
Xray Unit

Remote Control  
Connector

Battery Slot  
& Cover

Time & Mode Control Button

LCD Window



## BACK-SCATTERED FIELD



### Radiation Safety

- Radiation below detectable limit (0.06 mR/hr) @1m from focal spot
- Leakage far below FDA limit (25 mR/hr) @1m from focal spot
- Radiation 2.5 mR/hr @5cm from accesible case surface

## 3M REMOTE CONTROLLER



## BATTERY / CHARGER



### Material

### Charge Condition

Current : 1.0 A  
Voltage : 16.8 VDC  
Temperature : 0 ~ 40

### Use condition

Max. current : 10 A  
Voltage range :  
12(min) ~ 16.8(MAX)V  
Temperature : -20 ~ 40  
Full charging &  
discharging : 300 times  
Recharging cycle :  
1.5 ~ 2.0 hrs

## POWER SUPPLY



**Model :** JBL910A-1600  
**Input Voltage :** 100 ~ 250 VAC  
**Output Voltage :** 16.8 VDC  
**Current :** 1.0A