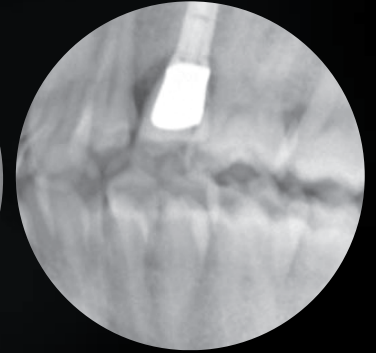
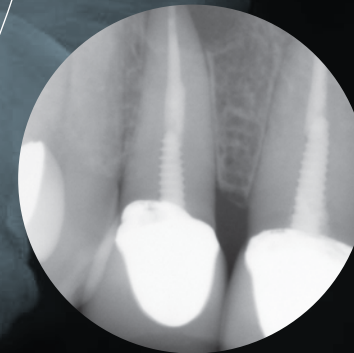


SAF-3000 MOBILE X-RAY



- Adopting High-frequency Circuit of Inverter Type
- X-ray System the Most Suitable to Diverse Digital Sensors.
- Simultaneous use of digital sensor and film.
- More than 300 Exposures are Possible with One Time Charging of Battery
- More Compact Size/weight than Existing Dental X-ray: 1.8kg (4lbs)



Model SAF-3000
X-ray generator Inverter
Tube voltage 60kV(fixed)
Tube current 2mA
Tube type Stationary

Tube Focal Spot 0.8mm
Target Angle 20°
Exposure(Increase 0.05sec) 0.05~1.25sec - Digital Sensor
 0.20~1.35sec - Film
Power Requirement DC 14.2~16.8V

Weight 1.8kg (4lbs)
Detector Film / Digital Sensor
Power Supply Rechargeable Battery
Display Graphic LCD

Detail & Accessories

Safari Dental Inc.
Cordless Digital
Xray Unit

Remote Control
Connector

Time & Mode Control Button

LCD Window

Battery Slot
& Cover



BACK-SCATTERED FIELD



Radiation Safety

- Radiation below detectable limit (0.06 mR/hr) @1m from focal spot
- Leakage far below FDA limit (25 mR/hr) @1m from focal spot
- Radiation 2.5 mR/hr @5cm from accessible case surface

3M REMOTE CONTROLLER



BATTERY / CHARGER



Material

Charge Condition

Current : 1.0 A
Voltage : 16.8 VDC
Temperature : 0 ~ 40

Use condition

Max. current : 10 A
Voltage range :
12(min) ~ 16.8(MAX)V
Temperature : -20 ~ 40
Full charging &
discharging : 300 times
Recharging cycle :
1.5 ~ 2.0 hrs

POWER SUPPLY



Model : JBL910A-1600
Input Voltage : 100 ~ 250 VAC
Output Voltage : 16.8 VDC
Current : 1.0A